



POS

MOUNTING SOLUTIONS



who we are, company profile	2
design in Italy	4
configure your pos	5
pole bases	8
accessories	7
arms holders	10
printer shelf	16
PinPad mounts	18
keyboard shelf	17
vesa 75/100 pro	18
vesa 75/100	22
index	32

ABOUT US

SN Systems is a company with over 25 years of experience in the manufacturing of cash drawers, multifunctional ergonomic solutions, self-ordering and payment kiosks, and all-in-one POS solutions to meet the needs of the Italian and international markets. Our constant pursuit of technological perfection and quality excellence has positioned us as a reliable partner, offering a wide range of solutions and products with an unparalleled level of quality.

SOLUTION AND INNOVATION

FOR THE POINT OF SALE



OUR MISSION

Customer-centricity and flexibility

Customer satisfaction is our priority and we offer customizable products and solutions for any commercial reality of the Retail, Hospitality and GDO sector, ensuring high quality standards. The main unit of the company deals with the production of cash drawers for cash registers, tablet stand solutions and point of sale poles solutions. Our experience and technological know-how allow us to deliver high quality products to the market.



Since 2015, we have introduced a new division, Retail Pole®, specializing in the design and production of ergonomic supports for payment terminals and ergonomic solutions for the point of sale. All the products in our range are carefully selected to ensure a high level of quality and reliability.

The hardware features and modern, functional design make our solutions a suitable response to the needs of a dynamic and ever-evolving market.



DESIGN IN ITALY

We are constantly designing and improving our products. We also develop and produce tailor-made solutions for our customers. We assemble them in our own production lines, control quality at every stage and take care of the final distribution. The value and Italian character is in every detail.



MULTIFUNCIONAL MOUNTS

STEP BY STEP GUIDE TO MAKE THE EASY STAND CONFIGURATION POSSIBLE

1. CHOOSE DESIRED MOUNTING

You can install the base with 4 screws, directly to the surface or You can apply the mounting base clamp.

In booth case You can securely and safety install the configurations.



2. CHOOSE THE BASE

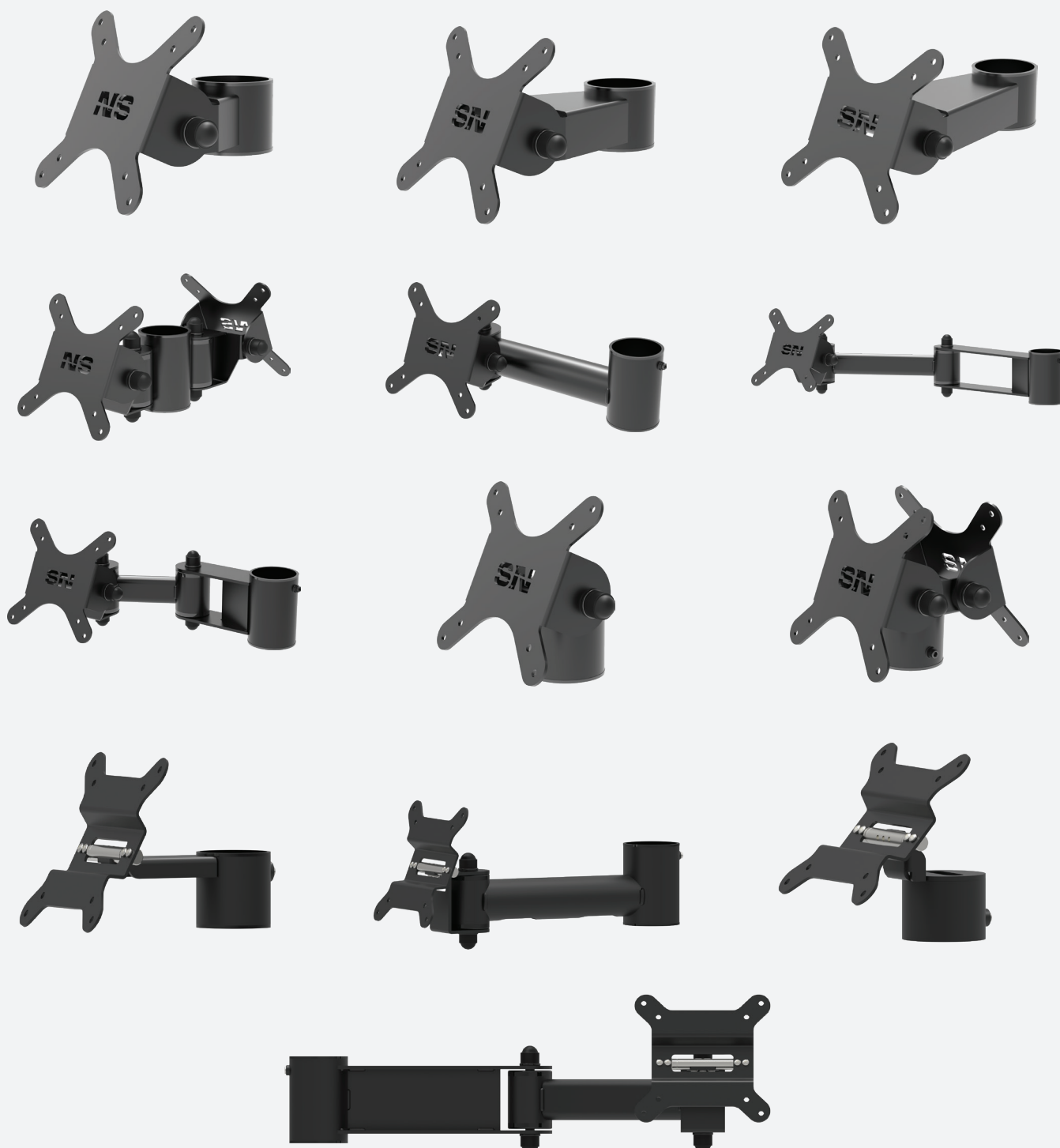
Depending on the number of items You need to install, choose the right height of the base, 300 mm, 400 mm, 500 mm. Ø is always 45 mm



MULTIFUNCIONAL MOUNTS

3. DECIDE ON THE VESA HOLDER

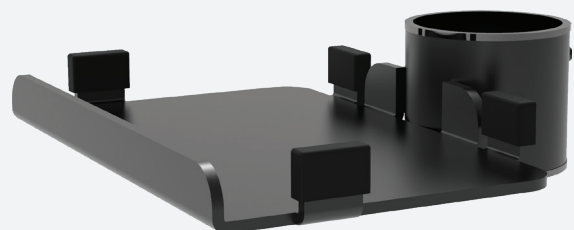
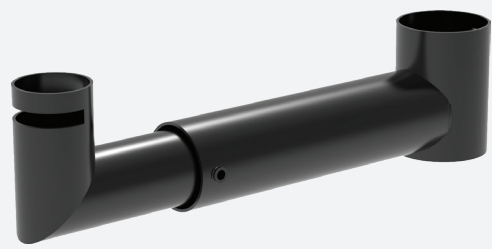
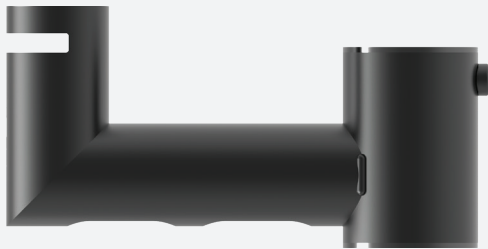
There are different holders to choose for the VESA 75/100. All solutions are feature the tilt and support vesa 75x75, 100x100.



MULTIFUNCIONAL MOUNTS

4. PICK ACCESSORIES TO REQUIRED DEVICES

The point of sale is about personalisation. The accessories help to make a Desired multifunctional configuration. From simple to a complex one.



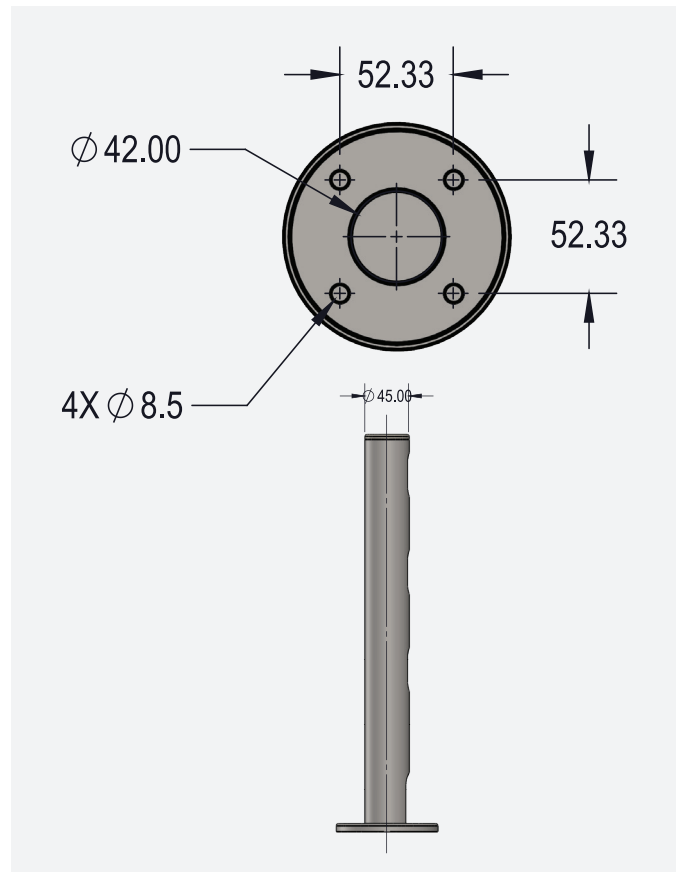


MAIN POLE

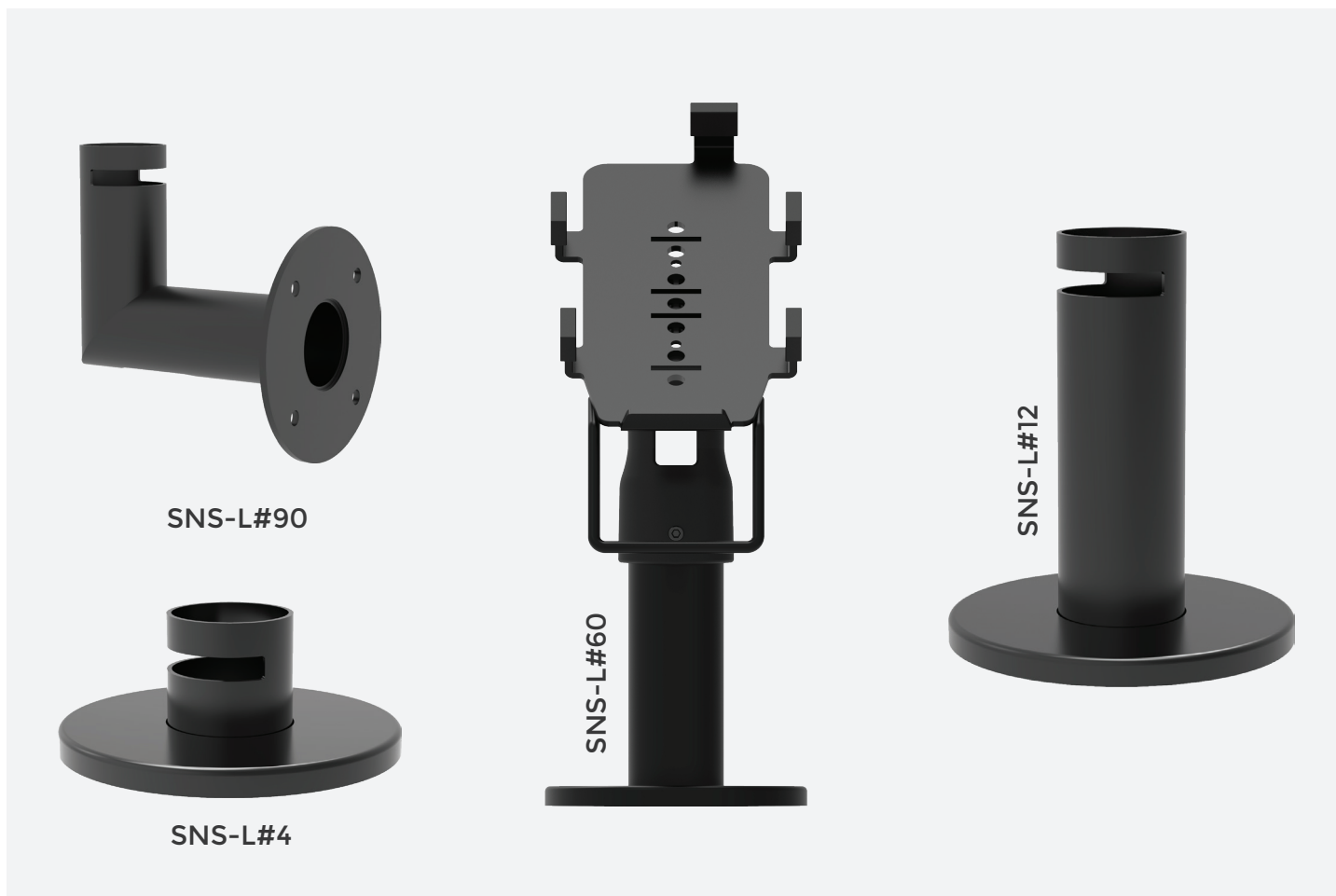
55 Ø

SNS-P#300, SNS-P#400,
SNS-P#500

Available in three heights to suit different
needs and the number of devices to be
installed.



SNS-P#300, SNS-P#400, SNS-P#500

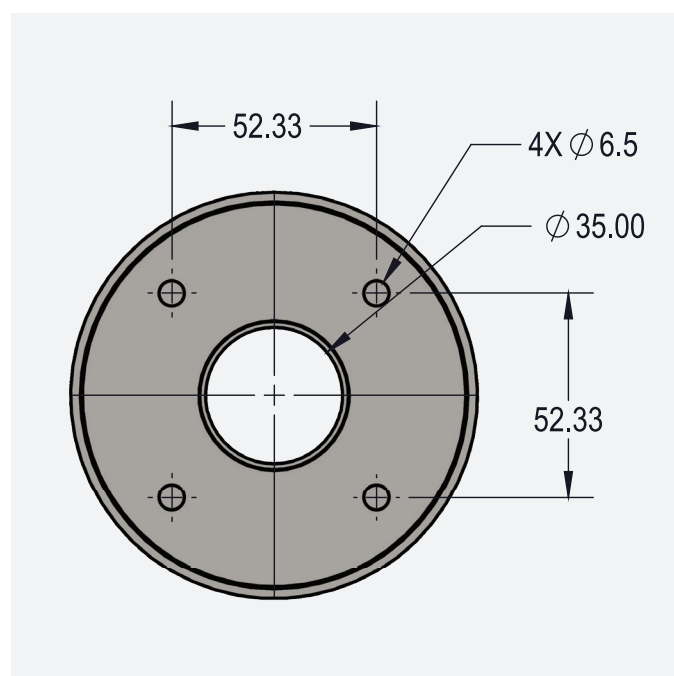


MAIN POLE

38 Ø

SNS-L#4, SNS-L#12, SNS-L#60,
SNS-L#90

Additional desk mounting systems, make the POS system fully modular and support easy installation of many devices in any desired configuration. Most common use with SNS-PINPAD



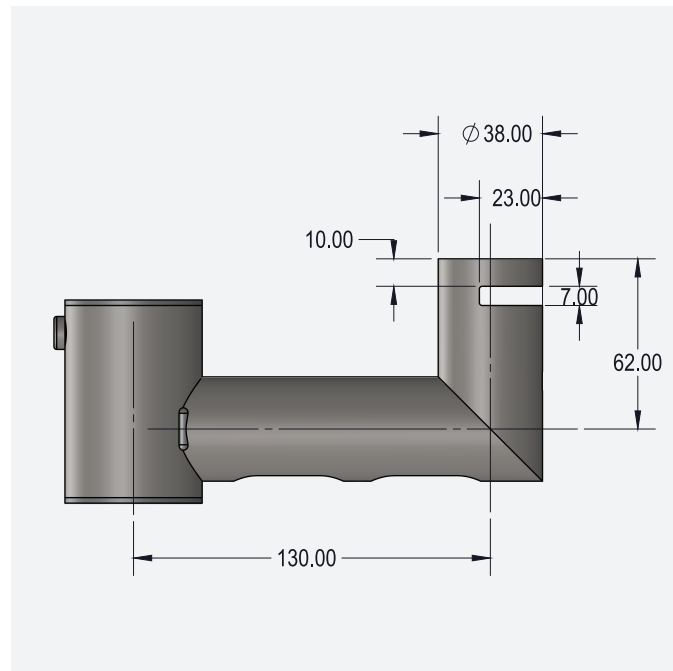
SNS-L#4, SNS-L#12, SNS-L#60, SNS-L#90



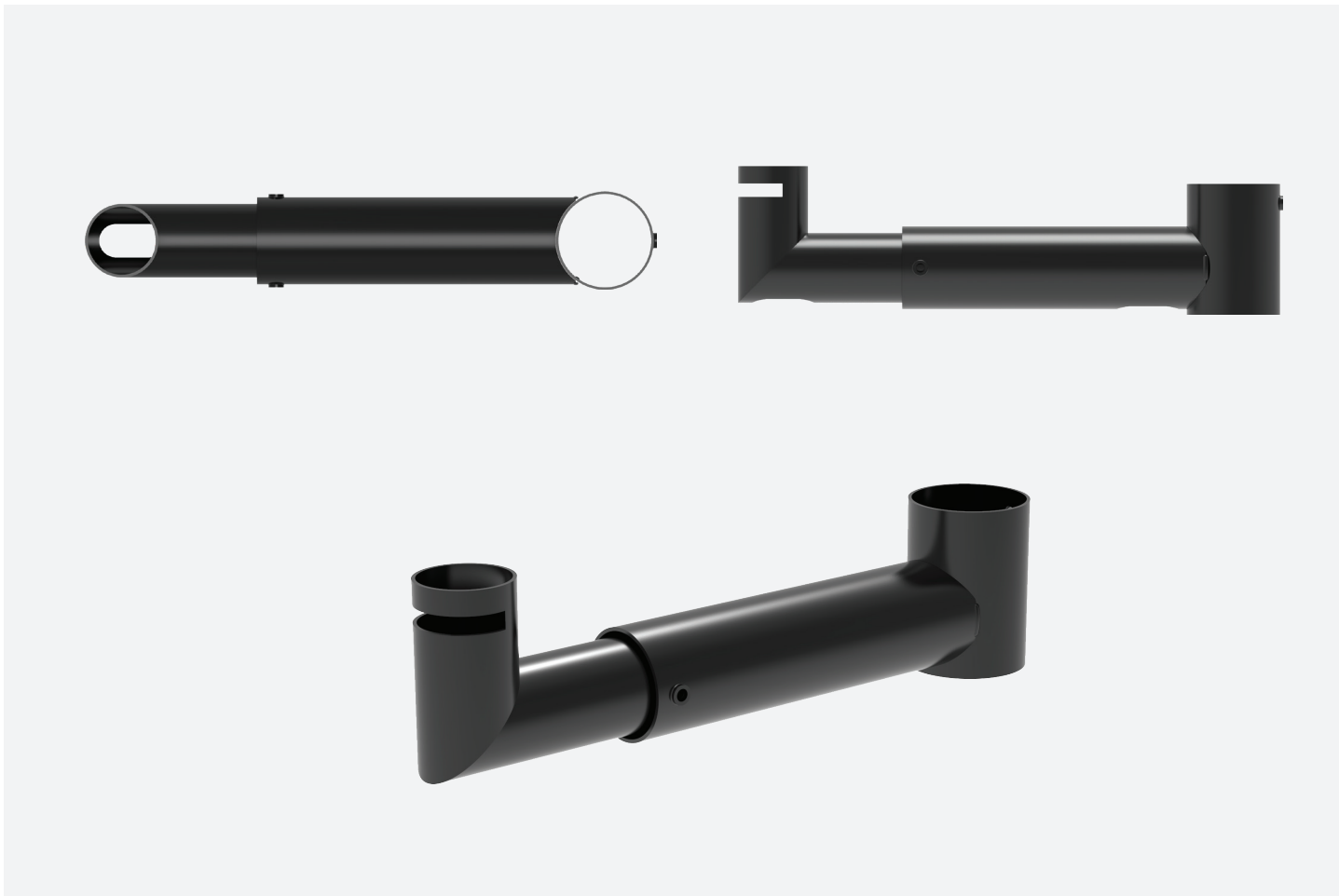
ARMS PERIPHERAL **SNS-A#130**

Pole arm peripheral with a length of 130 mm is a specialized component designed to provide a versatile and organized mounting solution. Inside-arm cable management system discreetly conceals cables within the arm structure, providing a neat and streamlined appearance.

- Color: Black, White, (#RAL customizable)
- Material: Steel FE360, ABS Plastic
- Max weight: 8.0 Kg
- Inside-arm cable management system



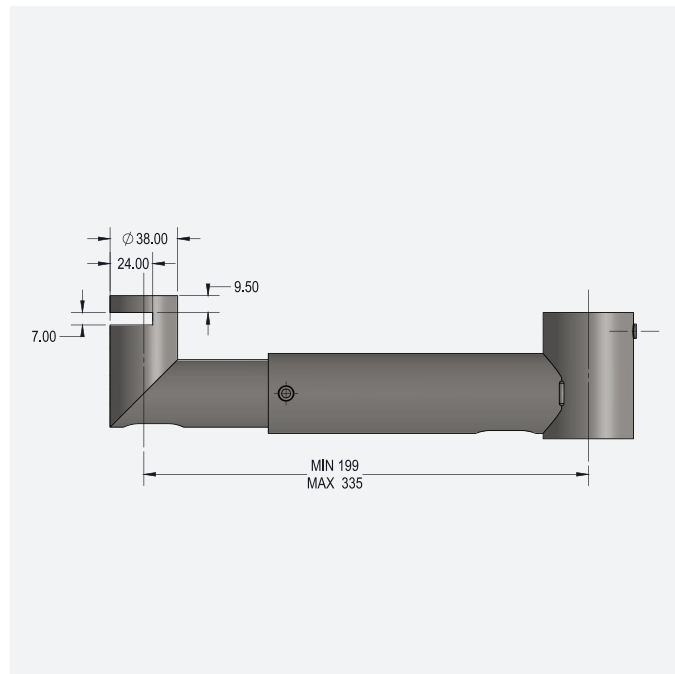
SNS-A#130



EXTENDED ARMS PERIPHERAL **SNS-A#150+300**

Pole arm peripheral with adjustable length from 200 to 335 mm is a specialized component designed to provide a versatile and organized mounting solution. Inside-arm cable management system discreetly conceals cables within the arm structure, providing a neat and streamlined appearance.

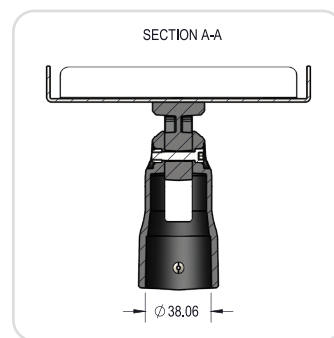
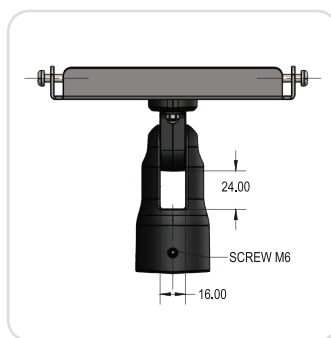
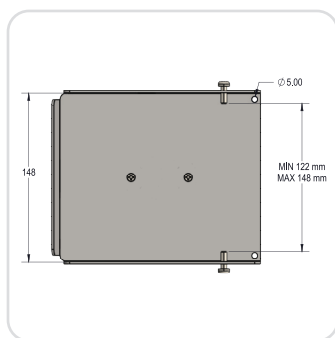
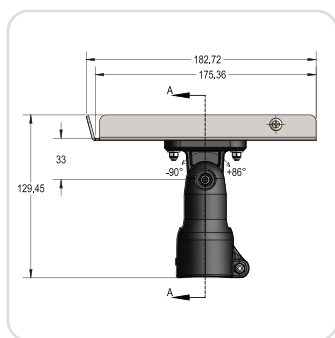
- Color: Black, White, (#RAL customizable)
- Material: Steel FE360, ABS Plastic
- Max weight: 8.0 Kg
- Inside-arm cable management system



SNS-A#150+300

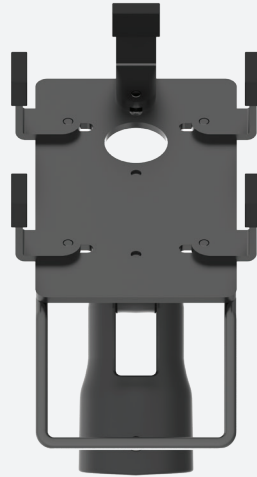
II SNS#PRINTER

Printer Plate Holder measuring 180x150 mm, designed to facilitate the secure mounting of a receipt printer. This purpose-built holder ensures stability and precision, providing an ideal solution for seamlessly integrating a receipt printer onto point of sale pole setup.



SPECIFICATION

- Tilt Angle: $+86^{\circ}$, -90°
- Inside cable management
- Rotation on the arm holder 180°
- Plate Length: 180 mm
- Color: Black, White, (#RAL customizable)
- Material: Steel FE360, ABS Plastic
- Max weight: 8.0 Kg
- Plate Width: min 122mm, max 150mm

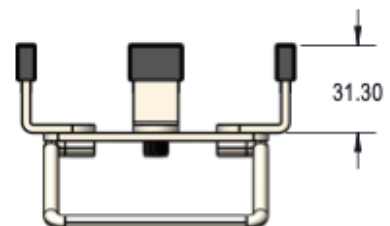
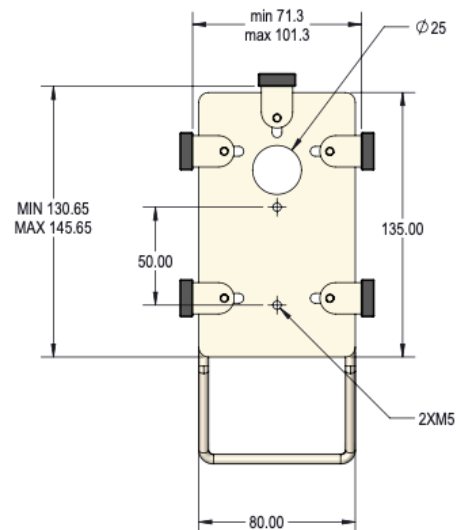


UNIVERSAL PINPAD MOUNT **SNS#PINPAD-UNI**

A universal solution dedicated to the installation of payment terminals. Equipped with an adjustment system. It can be adjusted to fit most devices available on the market.

Compatible measurements for electronic payment terminal installation:

- Width: min. 71.5 mm - max. of 101.3 mm
- Length: min. 130 mm - max. of 145 mm



SNS#PINPAD-UNI



INGENICO, VERIFONE, PAX, CUSTOMIZATIONS

A solutions dedicated to the installation of payment terminals. For each payment terminal brand in the market we have a proper plate holder. We are able to develop a special customized solution.

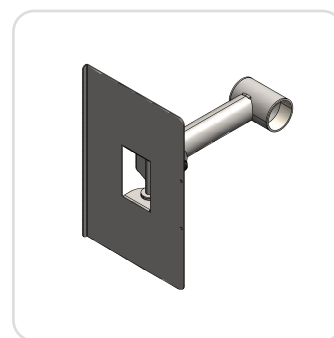
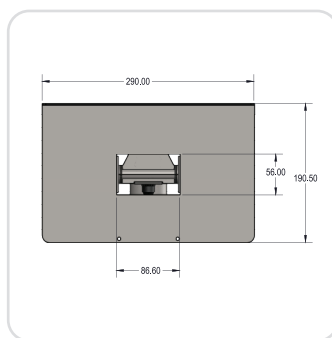
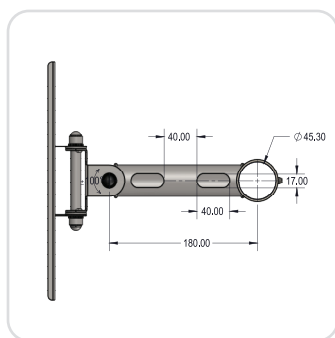
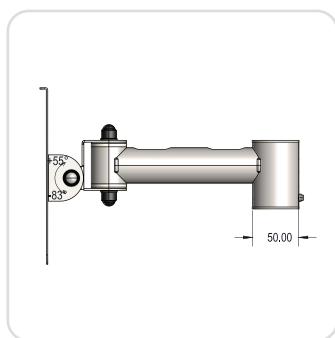


ingenico **Verifone®**



■ SNS#KEYB

Keyboard plate support base including extension arm for installation on SNS-P# product series. Plate size: 300(L) x 190(D) mm

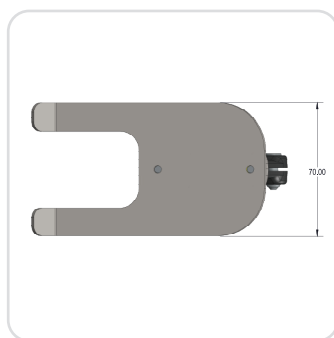
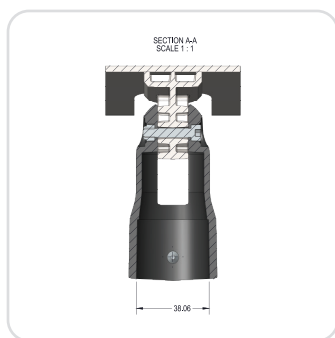
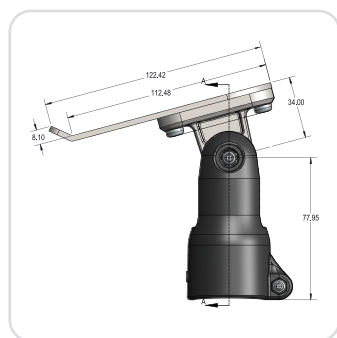


SPECIFICATION

- Tilt Angle: +55°, -83°
- Inside cable management
- Rotation adjustable on the pole at 360°
- Length extension from the main pole fixed 180mm
- Color: Black, White, (#RAL customizable)
- Material: Steel FE360, ABS Plastic
- Max weight: 8.0 Kg

■ SNS#B1

Handle Barcode Reader Plate, a purpose-built accessory designed to securely hold and support a handle barcode reader. This specialized plate ensures a stable and ergonomic solution for integrating your barcode reader seamlessly into your workflow, enhancing efficiency and ease of use.

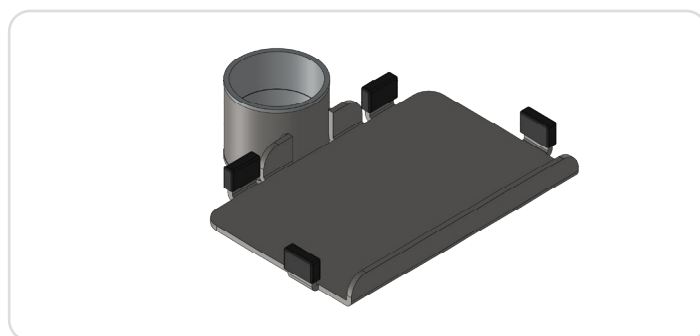
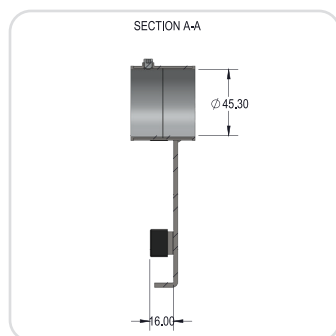
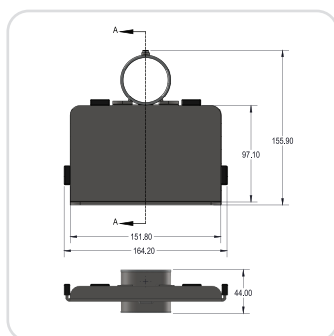
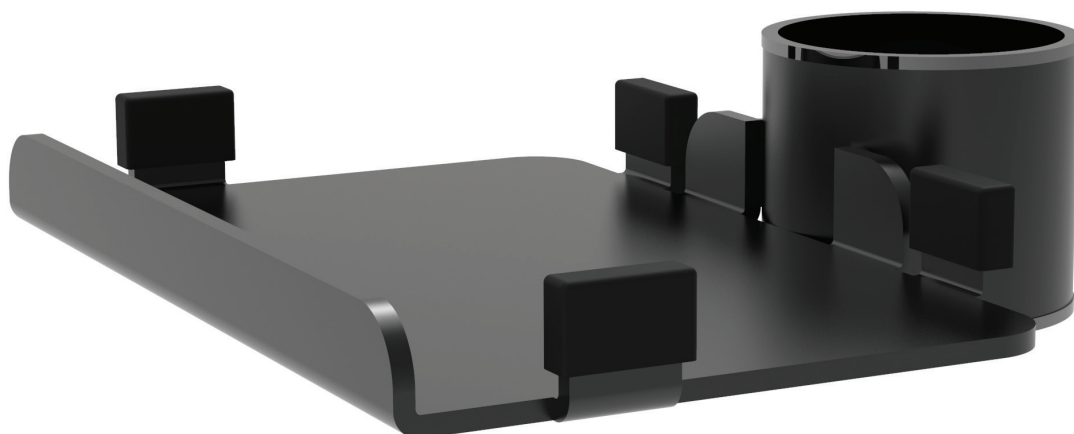


SPECIFICATION

- Tilt Angle: +150°, -15°
- Inside cable management
- Max weight: 8.0 Kg
- Holder dimension for most common hand barcode reader
- Rotation on the arm holde 180°
- Color: Black, White, (#RAL customizable)
- Material: Steel FE360, ABS Plastic

■ SNS#B2

This purpose-designed plate ensures a stable and reliable solution for seamlessly integrating the scanner into your workspace, offering enhanced scanning precision and efficiency. Elevate your scanning capabilities with confidence using our dedicated Single Plane Scanner Plate.

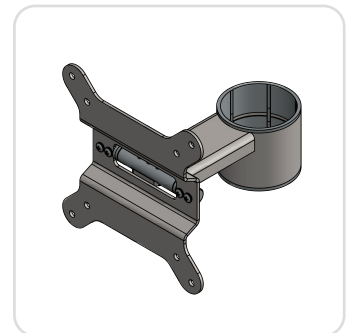
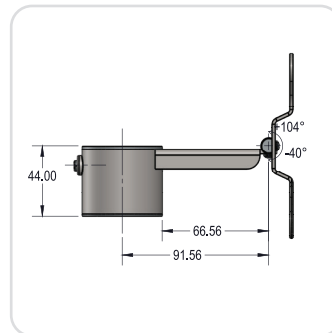
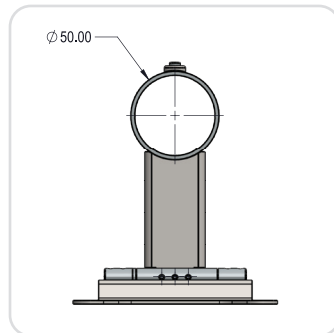
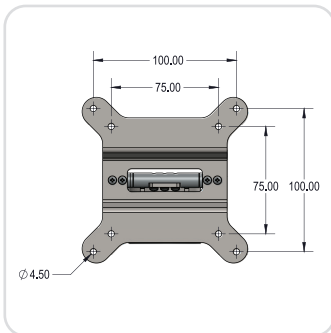
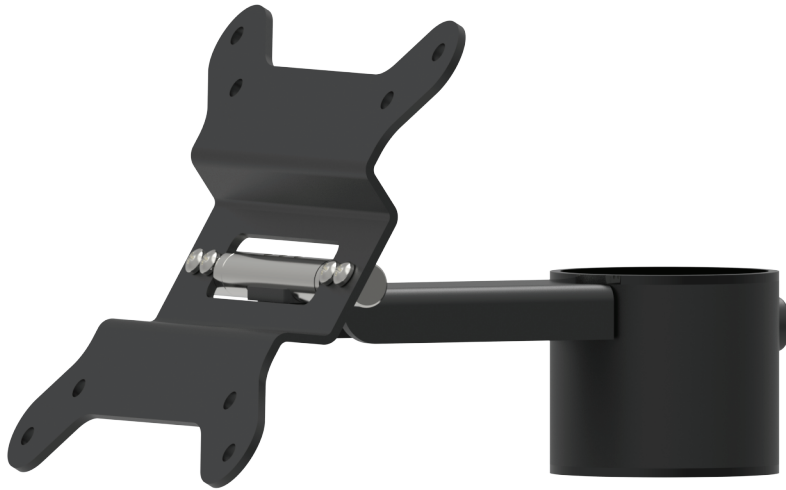


SPECIFICATION

- Available customization
- Rotation on the main pole 360°
- Plate holder internal dimension 151(W) x 97(D) mm
- Color: Black, White, (#RAL customizable)
- Material: Steel FE360, ABS Plastic
- Max weight: 8.0 Kg

■ SNS-V#201PRO

The new VESA 75/100 PRO, incorporated with a cutting-edge friction hinge, represents a significant advancement in mounting solutions for display and touch screen. The friction hinge is a specialized mechanism designed to provide professional-grade flexibility and adjustability. Unlike traditional mounting options, the friction hinge allows for smooth and precise adjustments, enabling users to easily position their displays at optimal viewing angles.

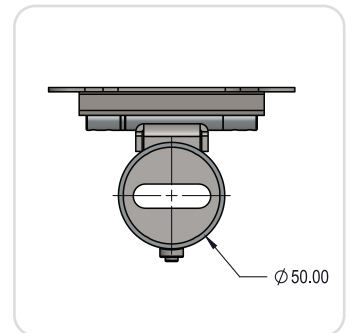
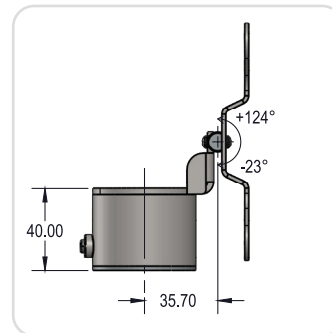
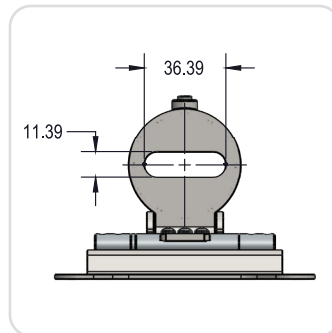
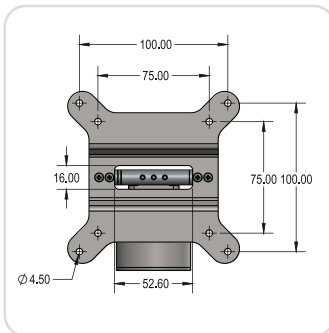


SPECIFICATION

- Product Code: SNS-V#201PRO
- VESA 75/100 holder mount
- Touch screen size from 8" to 27"
- Display inclination tilt: +104°, -40°
- Distance between main pole (SNS-P#) and vesa plate: 65 mm
- Rotation adjustable on the pole at 360
- Color: Black, White, (#RAL customizable)
- Material: Steel FE360, ABS Plastic
- Max weight: 15.00 Kg

■ SNS-V#TPRO

The VESA holder for the top of the pole is a mounting solution designed to securely attach displays or touchscreen monitors to the upper part of a pole structure. The new VESA 75/100 PRO, incorporated with a cutting-edge friction hinge, represents a significant advancement in mounting solutions for display and touch screen.

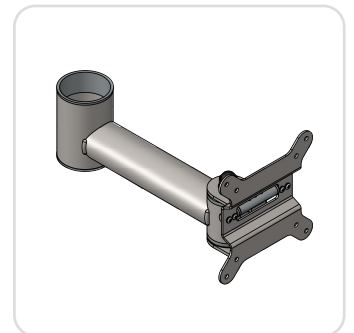
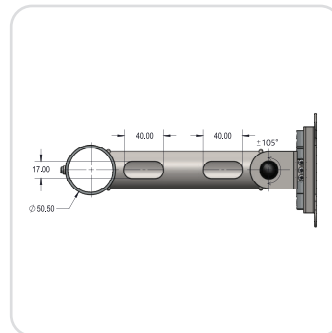
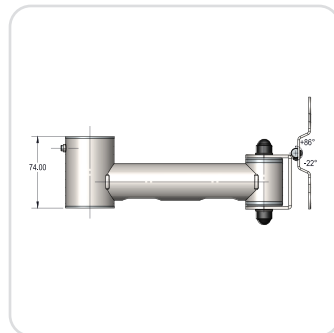
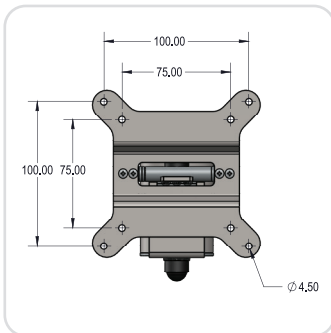


SPECIFICATION

- Product Code: SNS-V#TPRO
- VESA 75/100 holder mount
- Touch screen size from 8" to 27"
- Display inclination tilt: +124°, -23°
- Rotation adjustable on the pole at 360
- Color: Black, White, (#RAL customizable)
- Material: Steel FE360, ABS Plastic
- Max weight: 15.00 Kg

■ SNS-V#204PRO

This innovative design features an fixed arm peripheral mount coupled with a hinge mechanism on the VESA plate, offering a comprehensive solution for a wide range of monitor touch screen installation.

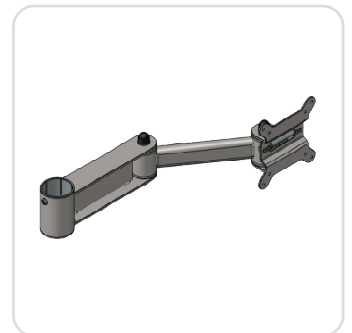
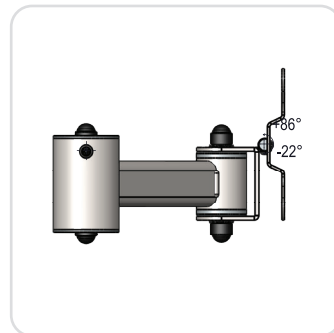
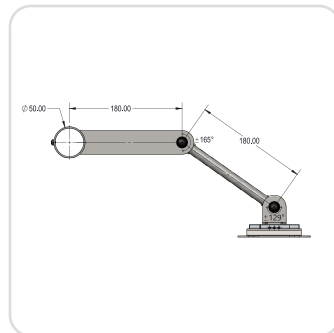
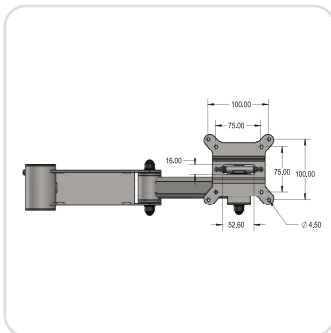
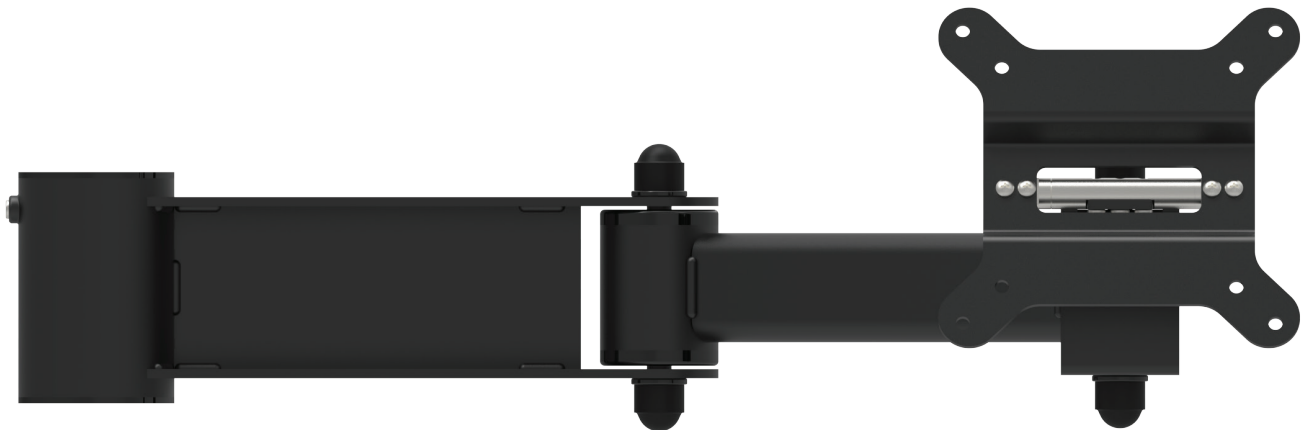


SPECIFICATION

- Product Code: SNS-V#204PRO
- VESA 75/100 holder mount
- Touch screen size from 8" to 27"
- Display inclination tilt: +86°, -22°
- VESA 75/100 holder mount with fixed arm holder 180L (mm)
- Cable management inside the arm
- Rotation adjustable on the pole at 360
- Color: Black, White, (#RAL customizable)
- Material: Steel FE360, ABS Plastic
- Max weight: 15.00 Kg

■ SNS-V#2APRO

This innovative design features an fixed arm peripheral mount coupled with a hinge mechanism on the VESA plate, offering a comprehensive solution for a wide range of monitor touch screen installation.

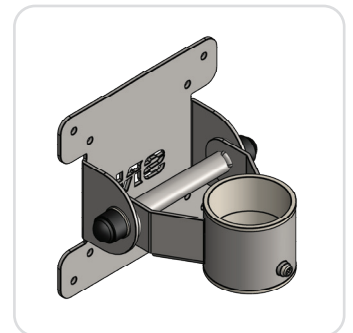
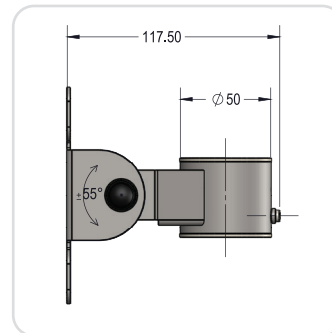
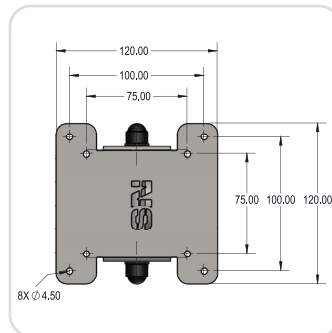
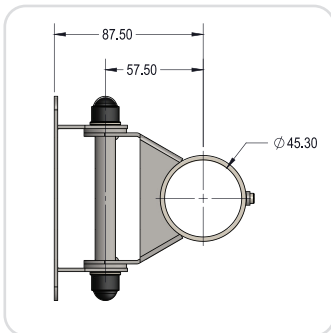


SPECIFICATION

- Product Code: SNS-V#2APRO
- VESA 75/100 holder mount
- Touch screen size from 8" to 27"
- Display inclination tilt: +86°, -22°
- Swivel arm with max extension 320mm
- Rotation adjustable on the pole at 360
- Color: Black, White, (#RAL customizable)
- Material: Steel FE360, ABS Plastic
- Max weight: 15.00 Kg

■ SNS-V#200

Easily install displays and touchscreen monitors with the versatile VESA 75/100 holder compatible with the SNS-P# product series.

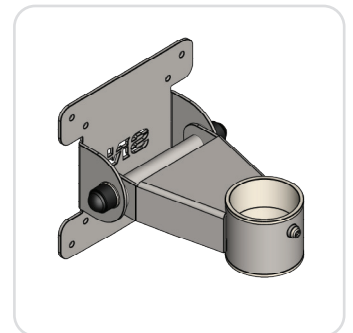
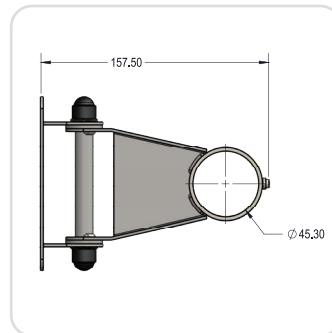
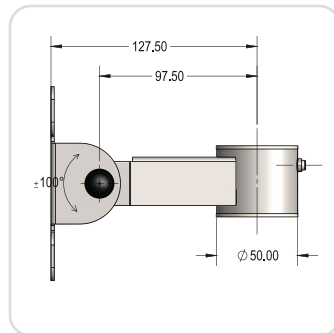
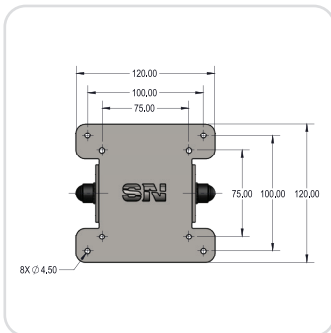


SPECIFICATION

- Tilt Angle: +55°, -55°
- VESA 75/100 holder mount
- Touch screen size from 8" to 24"
- Distance between main pole (SNS-P#) and vesa plate: 60 mm
- Rotation adjustable on the pole at 360°
- Color: Black, White, (#RAL customizable)
- Material: Steel FE360, ABS Plastic
- Max weight: 8.0 Kg

■ SNS-V#201

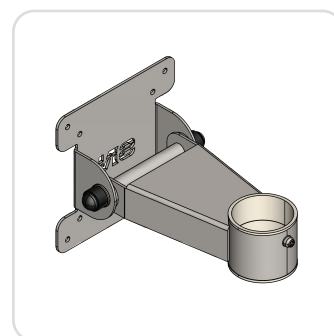
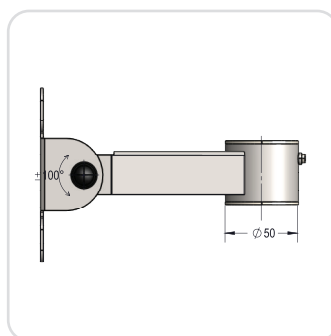
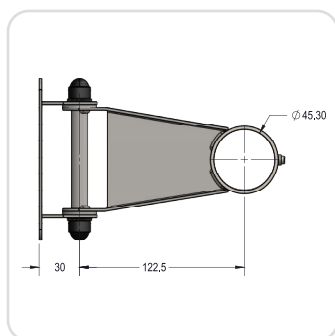
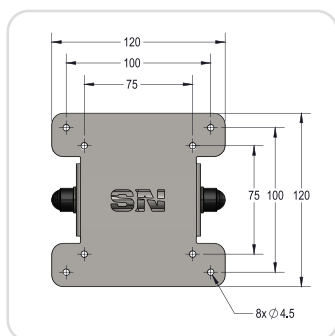
Easily install displays and touchscreen monitors with the versatile VESA 75/100 holder compatible with the SNS-P# product series.



SPECIFICATION

- Tilt Angle: +100°, -100°
- VESA 75/100 holder mount
- Touch screen size from 8" to 24"
- Distance between main pole (SNS-P#) and vesa plate: 80 mm
- Rotation adjustable on the pole at 360°
- Color: Black, White, (#RAL customizable)
- Material: Steel FE360, ABS Plastic
- Max weight: 8.0 Kg

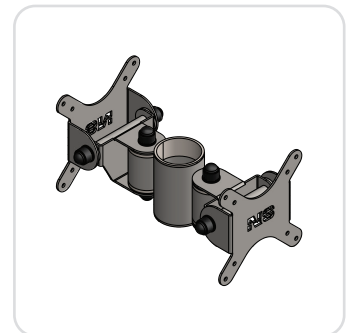
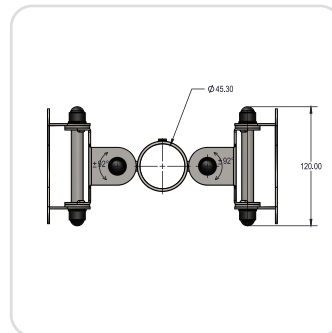
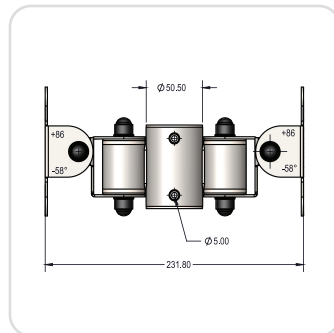
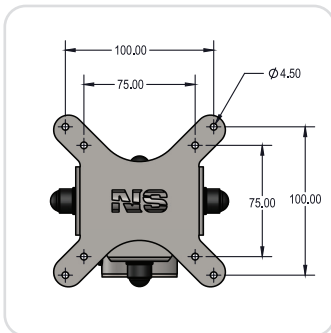
Easily install displays and touchscreen monitors with the versatile VESA 75/100 holder compatible with the SNS-P# product series.



- Tilt Angle: +100°, -100°
- VESA 75/100 holder mount
- Touch screen size from 8" to 24"
- Distance between main pole (SNS-P#) and vesa plate: 120 mm
- Rotation adjustable on the pole at 360°
- Color: Black, White, (#RAL customizable)
- Material: Steel FE360, ABS Plastic
- Max weight: 8.0 Kg

■ SNS-V#203

Easily install displays and touchscreen monitors with the versatile VESA 75/100 holder compatible with the SNS-P# product series.

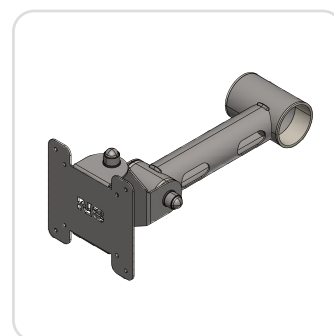
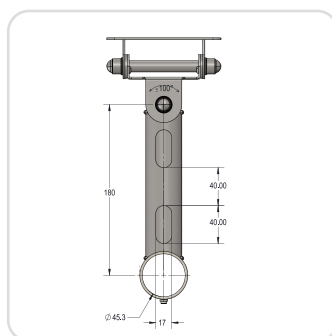
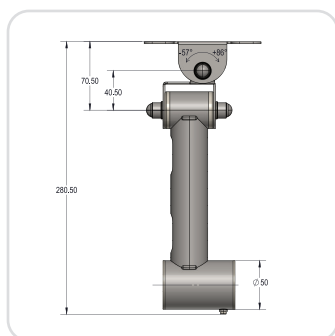
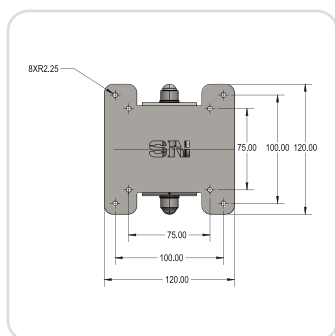
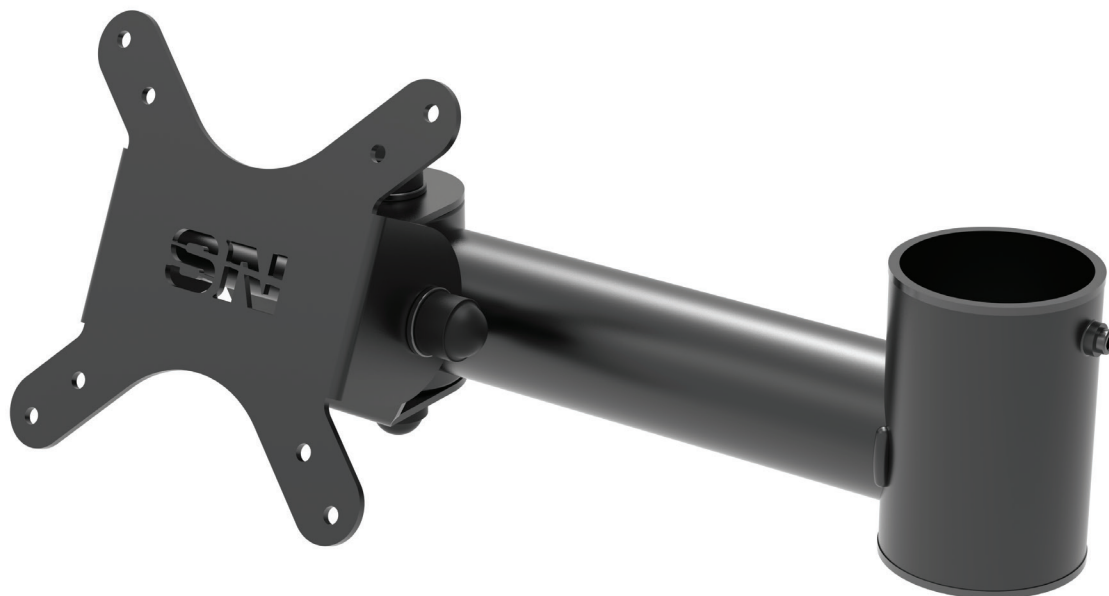


SPECIFICATION

- Tilt Angle: +86°, -58°
- x2 VESA 75/100 holder mount
- Touch screen size from 8" to 24"
- Distance between main pole (SNS-P#) and vesa plate: 55 mm
- Rotation adjustable +90°, -90°
- Color: Black, White, (#RAL customizable)
- Material: Steel FE360, ABS Plastic
- Max weight: 16.0 Kg

■ SNS-V#204

Screen Mount VESA 75/100 support with arm peripheral fixed mounted. Ideal to install Display and Touchscreen Monitor.

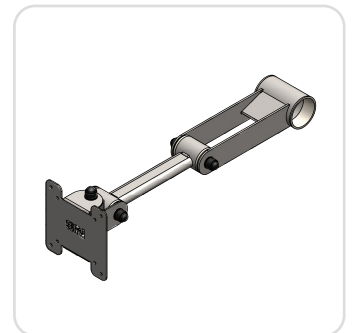
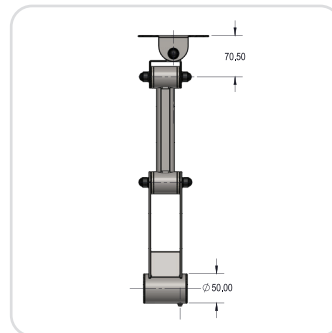
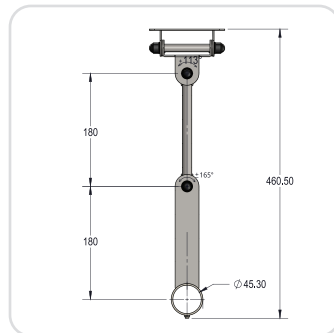
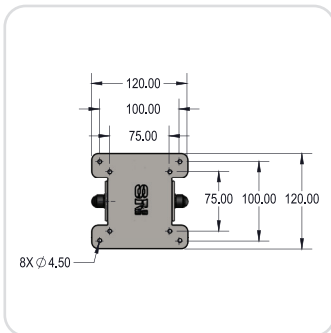


SPECIFICATION

- Tilt Angle: +86°, -57°
- Inside cable management
- Touch screen size from 8" to 24"
- VESA 75/100 holder mount with fixed arm holder 180(L) mm
- Rotation adjustable on the pole at 360°
- Color: Black, White, (#RAL customizable)
- Material: Steel FE360, ABS Plastic
- Max weight: 8.0 Kg

■ SNS-V#2A

Screen mount VESA 75/100 support with swivel arm peripheral extension and adjustable distance from the main pole (SNS-P#). Ideal to install Display and Touchscreen Monitor and adjust according to the checkout position operation.

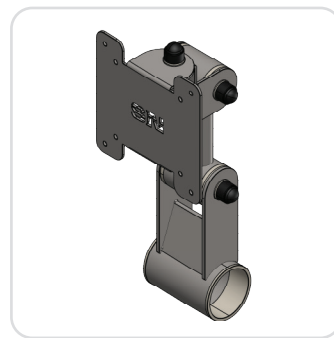
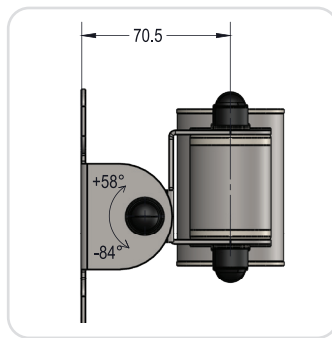
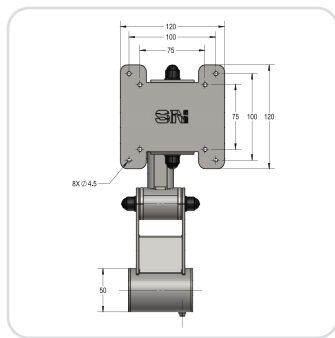
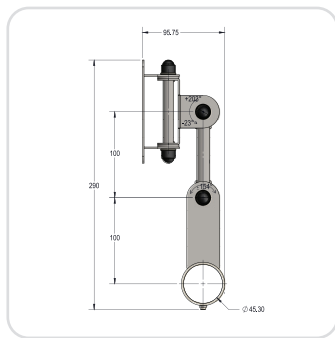
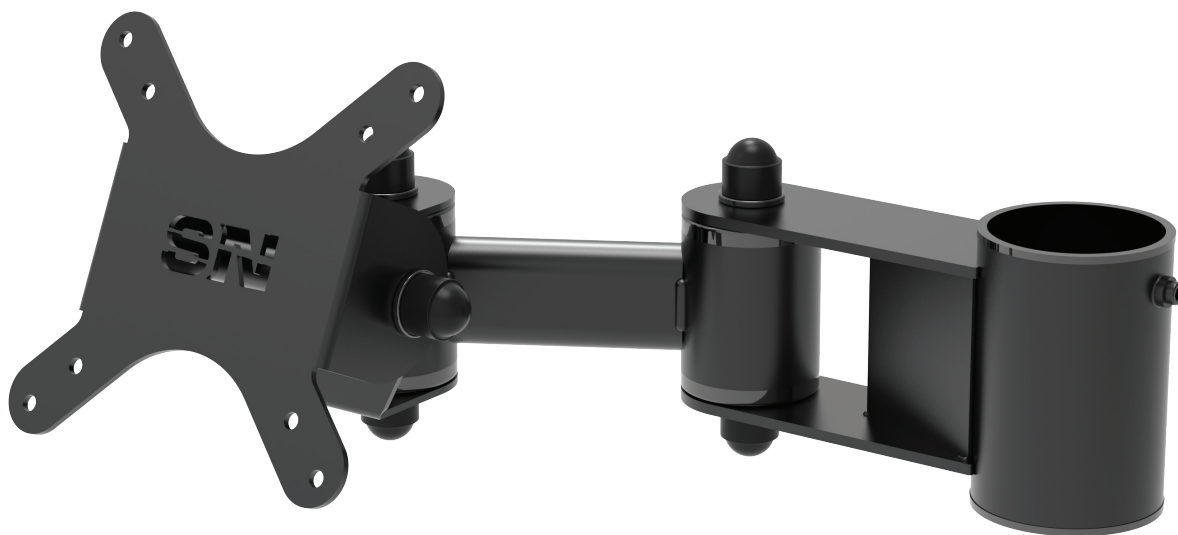


SPECIFICATION

- Tilt Angle: +86°, -57°
- Touch screen size from 8" to 24"
- Rotation adjustable on the pole at 360°
- VESA 75/100 holder mount with double extension arm holder (min 160mm to max 300mm)
- Color: Black, White, (#RAL customizable)
- Material: Steel FE360, ABS Plastic
- Max weight: 8.0 Kg

■ SNS-V#2A MINI

Screen mount VESA 75/100 support with swivel arm peripheral extension and adjustable distance from the main pole (SNS-P#). Ideal to install Display and Touchscreen Monitor and adjust according to the checkout position operation.

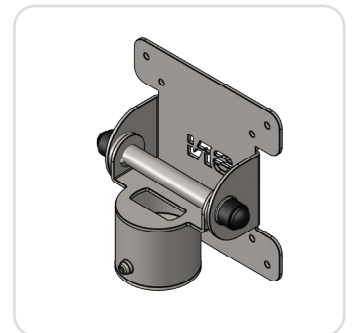
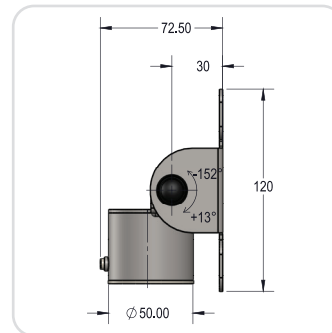
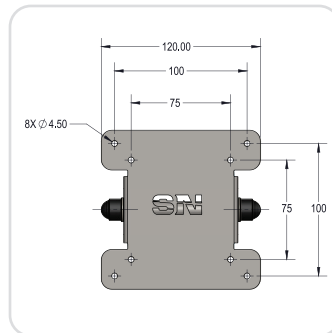
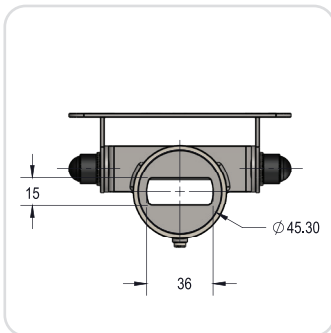


SPECIFICATION

- Touch screen size from 8" to 24"
- Tilt Angle: +84°, -58°
- Rotation adjustable on the pole at 360°
- VESA 75/100 holder mount with double extension arm holder (min 160mm to max 300mm)
- Color: Black, White, (#RAL customizable)
- Material: Steel FE360, ABS Plastic
- Max weight: 8.0 Kg

■ SNS-V#T

Single Display VESA 75/100 holder mounting support installable on top of SNS-P# product series. Ideal to install Display and Touchscreen Monitor.

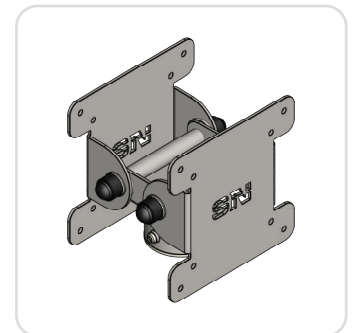
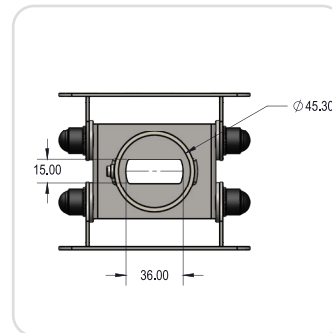
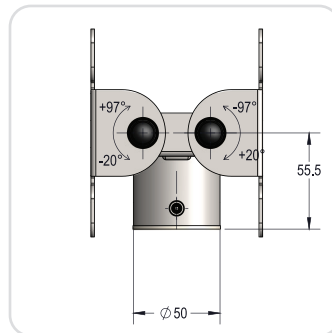
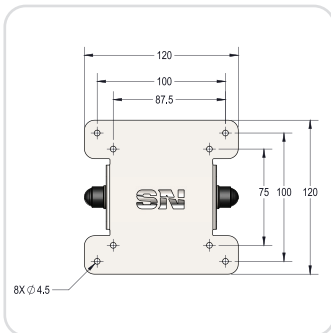


SPECIFICATION

- VESA 75/100 holder mount
- Inside cable management
- Touch screen size from 8" to 24"
- Tilt Angle: +13°, -152°
- Rotation adjustable on the pole at 360°
- Color: Black, White, (#RAL customizable)
- Material: Steel FE360, ABS Plastic
- Max weight: 8.0 Kg

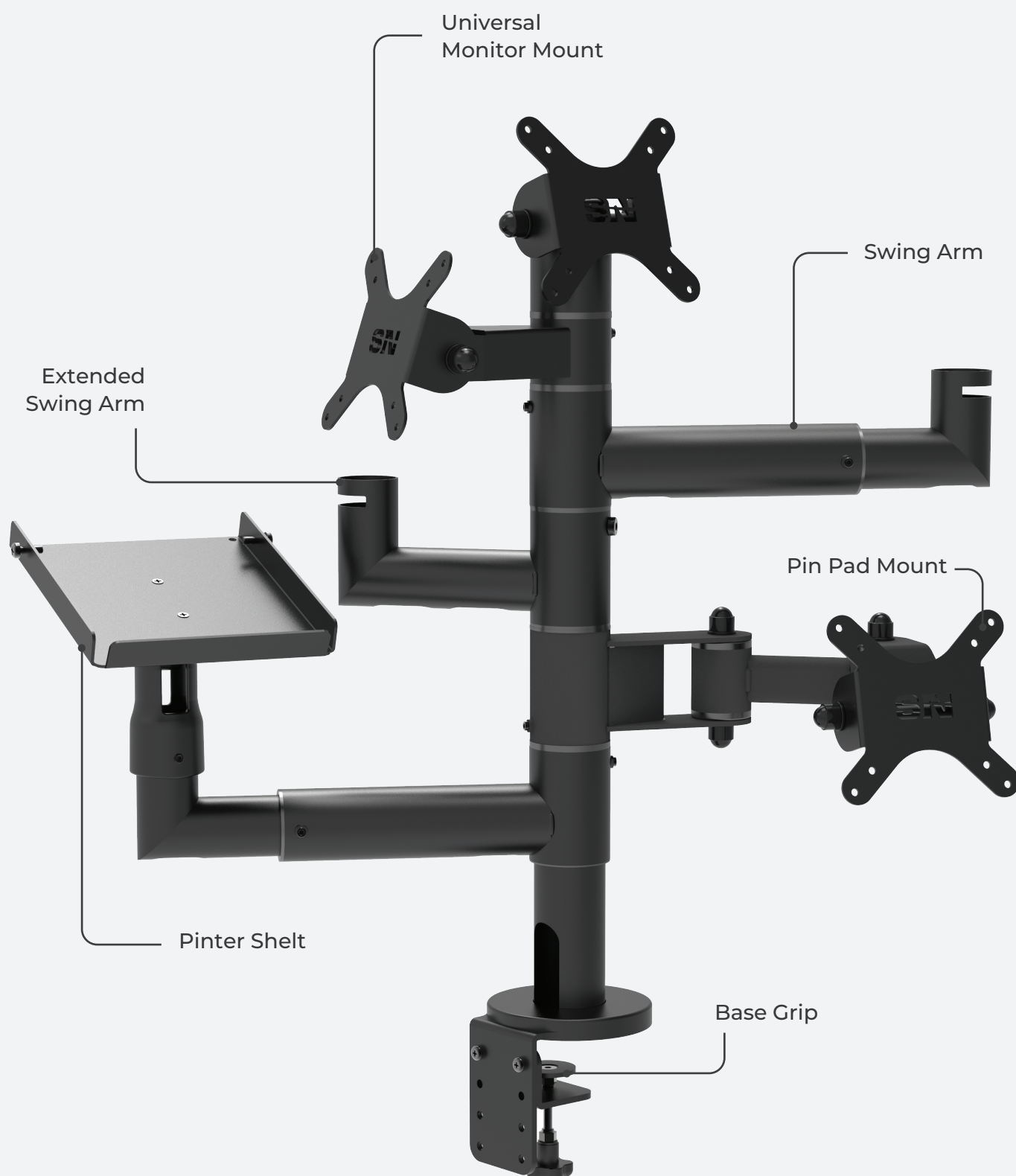
■ SNS-V#2T













Double Display VESA 75/100 holder mounting support installable on top of SNS-P# product series. Ideal to install Display and Touchscreen Monitor.



SPECIFICATION

- x2 VESA 75/100 holder mounts
- Inside cable management
- Touch screen size from 8" to 24"
- Tilt Angle: +97°, -20°
- Rotation adjustable on the pole at 360°
- Color: Black, White, (#RAL customizable)
- Material: Steel FE360, ABS Plastic
- Max weight: 16.0 Kg



picture	prod. Code	description	end user price
	SNS-P#300	Main Pole 300H (mm) - diameter 45 (mm)	44.00 €
	SNS-P#400	Main Pole 400H (mm) - diameter 45 (mm)	46.00 €
	SNS-P#500	Main Pole 500H (mm) - diameter 45 (mm)	48.00 €
	SNS-L#4	Main Pole 40H (mm) - diameter 38 (mm)	18.00 €
	SNS-L#12	Main Pole 120H (mm) - diameter 38 (mm)	20.00 €
	SNS-L#90	Main Pole 120H (mm) - diameter 38 (mm)	24.00 €
	SNS-L#60	Main Pole 180H (mm) - diameter 38 (mm) + SNS#PINPAD-***	32.00 €
	SNS-T#CLAMP	Main Pole Tablet Clamp (for 38 and 45 mm pole)	18.00 €
	SNS-V#T	VESA 75/100 top holder with friction hinge	62.00 €
	SNS-V#201PRO	VESA 75/100 holder with friction hinge	64.00 €
	SNS-V#204PRO	VESA 75/100 holder with friction hinge and arm 180 mm	98.00 €
	SNS-V#2APRO	VESA 75/100 holder with friction hinge and swivel arm	135.00 €

picture	prod. Code	description	end user price
	SNS-V#200	Extra Short VESA 75/100 holder	43.00 €
	SNS-V#201	Medium VESA 75/100 holder	44.00 €
	SNS-V#202	Large VESA 75/100 holder	48.00 €
	SNS-V#203	x2 Swing VESA 75/100 holder	115.00 €
	SNS-V#204	Arm 180 and VESA 75/100 holder	85.00 €
	SNS-V#T	VESA 75/100 Top holder	48.00 €
	SNS-V#2T	x2 VESA 75/100 Top holder	55.00 €
	SNS-V#2A	VESA 75/100 Swing Arm	110.00 €
	SNS-V#2A MINI	VESA 75/100 Swing Arm MINI	95.00 €
	SNS-V#W	VESA 75/100 Wall Mount	32.00 €
	SNS-A#130	Arm 130L (mm) holder	38.00 €
	SNS-A#150+300	Extended Arm 150+300 (mm) holder	52.00 €

picture	prod. Code	description	end user price
	SNS#PRINTER	POS Printer holder shelf	55.00 €
	SNS#PINPAD-U	Universal POS Pin Pad holder	48.00 €
	SNS-PINPAD-IN	POS Pin Pad holder for Ingenico models - please specify the model reference name	46.00 €
	SNS-PINPAD-VE	POS Pin Pad holder for Verifone models - please specify the model reference name	46.00 €
	SNS-PINPAD-PA	POS Pin Pad holder for PAX models - please specify the model reference name	46.00 €
	SNS#KEYB	Swing Keyboard holder	75.00 €
	SNS-B#1	Hand Barcode Reader holder	47.00 €
	SNS-B#2	Barcode Reader holder shelf	47.00 €
	SNS#2LOCK	x2 T-Bar Lock	16.00 €
	SNS#CM1	Cable Management	4.40 €
	SNS#CM2	Cable Management	4.50 €